

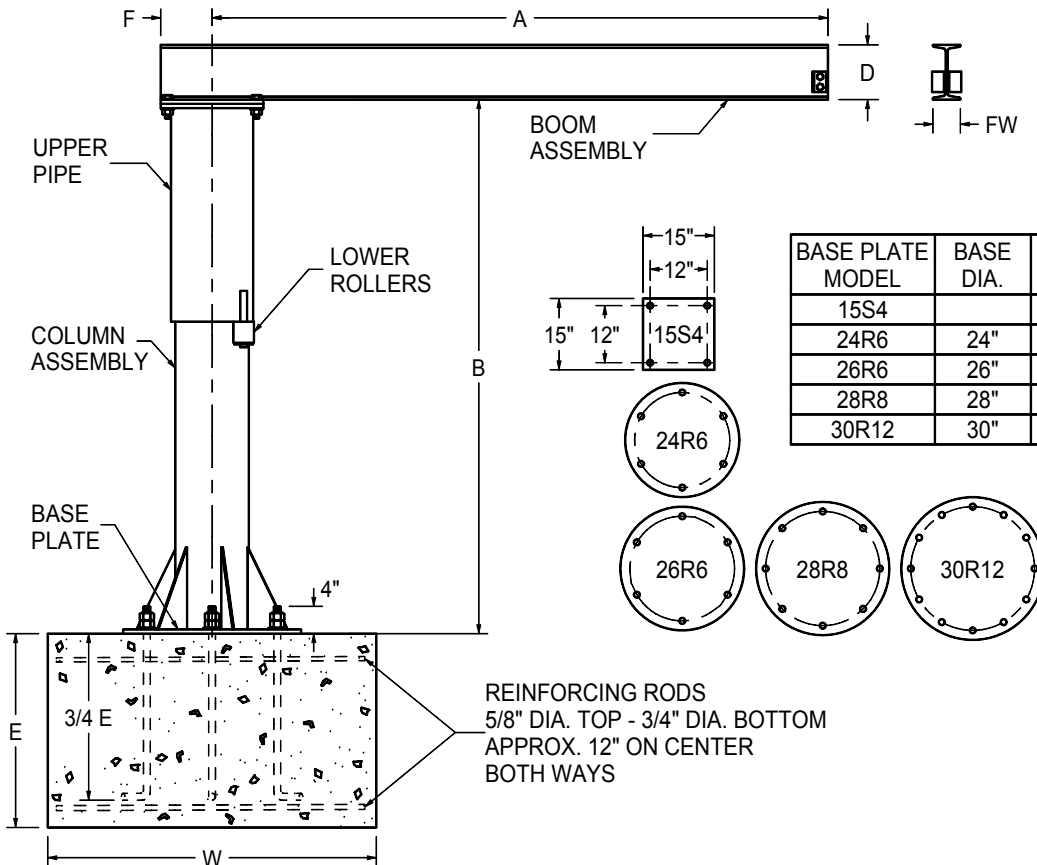
FLOOR MOUNTED 'B' SERIES JIB CRANE SPECIFICATIONS

Jib Crane Accessories:

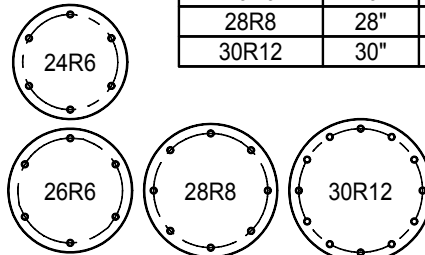
- Anchor Bolt Kits
- Tagline Kits
- Templates
(paper & plywood)
- Hoists & Trolleys
(electric & manual)

CAP. (LBS.)	DIMENSIONS						BASE PLATE MODEL	B = 8' HT.		B = 10' HT.		B = 12' HT.	
	A	D	FW	E	W	F		LBS.	MODEL	LBS.	MODEL	LBS.	MODEL
250	6'	5"	3"	3'	4'	4"	15S4	309	B2586	338	B25106	368	B25126
250	8'	5"	3"	3'	4'	4"	15S4	329	B2588	358	B25108	388	B25128
250	10'	5"	3"	3'	4'	4"	15S4	349	B25810	378	B251010	408	B251210
250	12'	5"	3"	3'	4'	4"	15S4	369	B25812	398	B251012	428	B251212
250	14'	6"	3 3/8"	3'	5'	4"	15S4	425	B25814	454	B251014	484	B251214
250	16'	6"	3 3/8"	3'	5'	5"	15S4	499	B25816	537	B251016	575	B251216
500	6'	5"	3"	3'	4'	5"	15S4	358	B586	396	B5106	434	B5126
500	8'	5"	3"	3'	4'	5"	15S4	378	B588	416	B5108	454	B5128
500	10'	5"	3"	3'	4'	5"	15S4	398	B5810	436	B51010	474	B51210
500	12'	6"	3 3/8"	3'	4'	6 1/2"	24R6	554	B5812	599	B51012	644	B51212
500	14'	8"	4"	3'	5'	6 1/2"	24R6	665	B5814	710	B51014	755	B51214
500	16'	8"	4"	3'	5'	6 1/2"	24R6	702	B5816	747	B51016	792	B51216
750	6'	5"	3"	3'	4'	6 1/2"	24R6	463	B7586	508	B75106	553	B75126
750	8'	6"	3 3/8"	3'	4'	6 1/2"	24R6	504	B7588	549	B75108	594	B75128
750	10'	6"	3 3/8"	3'	4'	6 1/2"	24R6	529	B75810	574	B751010	619	B751210
750	12'	6"	3 3/8"	3'	4'	7 1/2"	24R6	707	B75812	763	B751012	819	B751212
750	14'	8"	4"	3'	5'	7 1/2"	24R6	818	B75814	874	B751014	931	B751214
750	16'	8"	4"	3'	5'	7 1/2"	26R6	866	B75816	922	B751016	978	B751216
1000	6'	6"	3 3/8"	3'	4'	6 1/2"	26R6	490	B186	535	B1106	580	B1126
1000	8'	6"	3 3/8"	3'	4'	6 1/2"	26R6	515	B188	560	B1108	605	B1128
1000	10'	8"	4"	3'	4'	7 1/2"	26R6	756	B1810	812	B11010	868	B11210
1000	12'	8"	4"	3'	4'	7 1/2"	26R6	793	B1812	849	B11012	905	B11212
1000	14'	8"	4"	3'	5'	7 1/2"	26R6	848	B1814	904	B11014	960	B11214
1000	16'	10"	4 5/8"	3'	5'	8 1/2"	26R6	1046	B1816	1113	B11016	1180	B11216
2000	6'	8"	4"	4'	5'	8 1/2"	28R8	745	B286 **	832	B2106	899	B2126
2000	8'	8"	4"	4'	5'	8 1/2"	28R8	802	B288	869	B2108	935	B2128
2000	10'	8"	4"	4'	5'	8 1/2"	28R8	739	B2810	905	B21010	972	B21210
2000	12'	10"	4 5/8"	4'	6'	9 1/2"	30R12	1069	B2812	1143	B21012	1216	B21212

** B286 Uses base plate model 26R6.



BASE PLATE MODEL	BASE DIA.	BOLT CIRCLE	NO. HOLES	HOLE DIA.	BOLT DIA.
15S4			4	7/8"	3/4"
24R6	24"	20"	6	1 1/4"	1"
26R6	26"	22"	6	1 1/4"	1"
28R8	28"	24"	8	1 1/4"	1"
30R12	30"	26"	12	1 1/4"	1"



1377 Kimberly Drive
 Neenah, WI 54956-1642
 Phone (920) 722-0101
 Fax (920) 725-1394
www.contrx.com